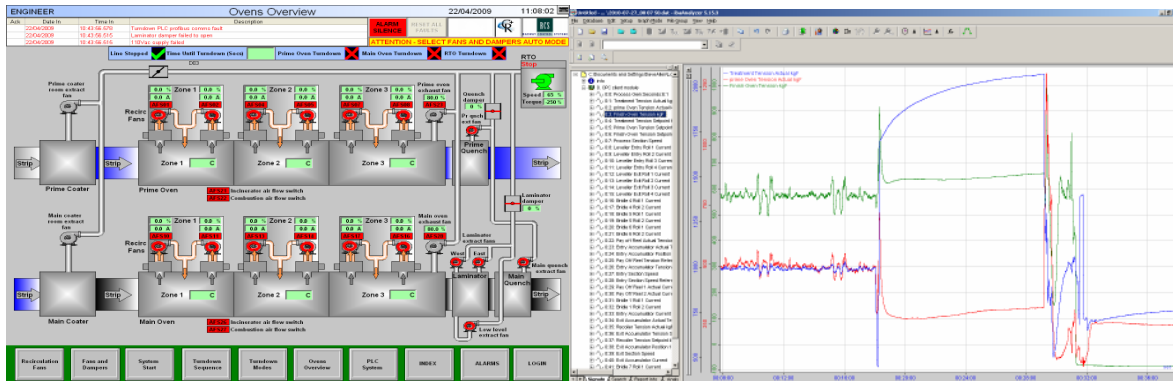


## The GEM 80 OPC SERVER from Radway Control Systems.



### Innovation in Industrial Automation, Control and Information Systems Integration.

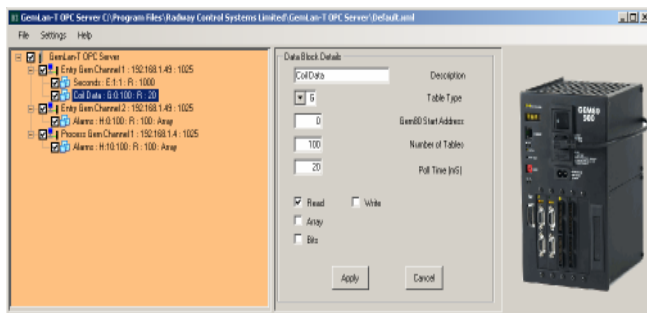
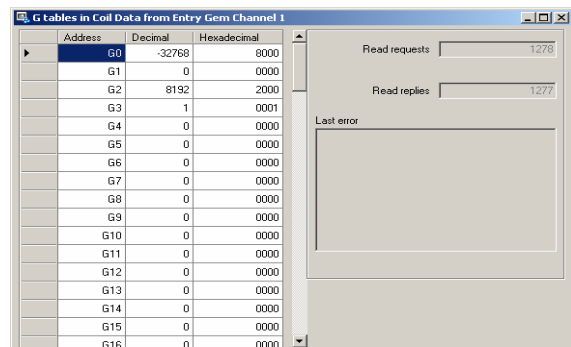
The OPC Server, from Radway Control Systems Ltd, is designed to bridge Windows based applications, such as SCADA and Dataloggers, with process control hardware.

Specifically designed for the GEM 80 range of Programmable Logic Controllers, the OPC server provides connectivity between the GEM80 PLC, fitted with GemLan-T Ethernet, and Microsoft Windows based packages that support OPC.

The server software can be installed onto a PC fitted with a standard network card, no additional hardware is required.

#### Advantages & Benefits:

- Simple and quick to configure. Enter the Controller IP address and choose which tables to transfer. All tables can be written to or read from, subject to the normal GEM80 rules.
- The user can specify the poll times for each data block to enable throughput to be maximised.
- The user defines the quantity of the 25 available channels that are opened to each controller.
- Real time Data Monitor window to aid configuration.

Address	Decimal	Hexadecimal
G0	-32768	8000
G1	0	0000
G2	8192	2000
G3	1	0001
G4	0	0000
G5	0	0000
G6	0	0000
G7	0	0000
G8	0	0000
G9	0	0000
G10	0	0000
G11	0	0000
G12	0	0000
G13	0	0000
G14	0	0000
G15	0	0000
G16	0	0000

Additional interface elements include 'Read requests' (1278) and 'Read replies' (1277) counters, and a 'Last error' field.

- Supports OPC Array data types for efficient data transfer over the OPC interface.
- Supports OPC Boolean data types, allowing individual bits to be written to and read from the controller.
- Automatic selection of OPC text data type if requested by the OPC client, text is decoded as per standard GEM80 data table format.
- Configuration file is in standard .xml format, allowing editing with any .xml editor.
- Instant graphical indication of which controller connections are active.
- ‘On the fly’ editing of connections and data blocks, no requirement to stop the server or reboot.

A fully functional demonstration copy of the OPC server is available for evaluation purposes. For a copy of the software, pricing or other information please contact:

## Contact Details

Radway Control Systems Ltd  
 Unit 1, West Avenue  
 Kidsgrove  
 Stoke-on-Trent  
 Staffordshire  
 ST7 1TR  
 United Kingdom

Tel: +44 (0) 1782 776622

Fax: +44 (0) 1782 785409

Email: [email@radway.co.uk](mailto:email@radway.co.uk)

[www.Radway.co.uk](http://www.Radway.co.uk)



## Industrial automation, control and information systems integration.

Radway Control Systems Ltd is registered in England, No. 2953969  
 Registered Office: Unit 1, West Avenue,  
 Kidsgrove, Staffs ST7 1TR

**Innovation in Industrial Automation, Control and Information Systems Integration.**